

Mobile Windsock Assembly

Australian Engineered and Manufactured. Designed for locations where there is a need for an extremely robust, safe & easy to operate, Mobile Windsock Assembly

Why choose this Mobile Windsock?:

- Ideal wind monitoring solution for mining, civil construction, infrastructure projects, and any site requiring a robust, non-permanent windsock
- Improve safety and Reduce costs: the hinging pole design eliminated working at heights, removing the need for costly EWP and reducing setup time
- Australian Engineered for Wind Regions A, B, C & D (cyclonic) in Australia, dependent on ballast



Overall concept: 4 - 6m Swivelling Pole on Moma Solar Rotomold Base



Highly portable - either by forklift or, if emptied, by hand



The pole swivels eliminating any work at heights



The Rotor Arm Pivot fastened to the top of the pole, enables an extremely robust Windsock swivel assembly

An Engineered solution to a specific problem:

- 'Best in class' - no comparable product on the market
- Highly portable - very suitable for project based activities: mining & resources, civil infrastructure, and construction
- Engineered for Wind Regions A, B, C & D (cyclonic) in Australia, dependent on ballast
- Safe - no working at heights, no EWP. Very easy to install and commission
- Reduced ongoing maintenance costs through the use of a hinging pole
- Reusable pole and base eliminates the cost and waste of a fixed base, ground mounted pole, or heavy concrete slab

Mobile Windsock Assembly

Australian Engineered and Manufactured. Designed for locations where there is a need for an extremely robust, safe & easy to operate, mobile Windsock Assembly

Windsock & Rotor Arm Pivot

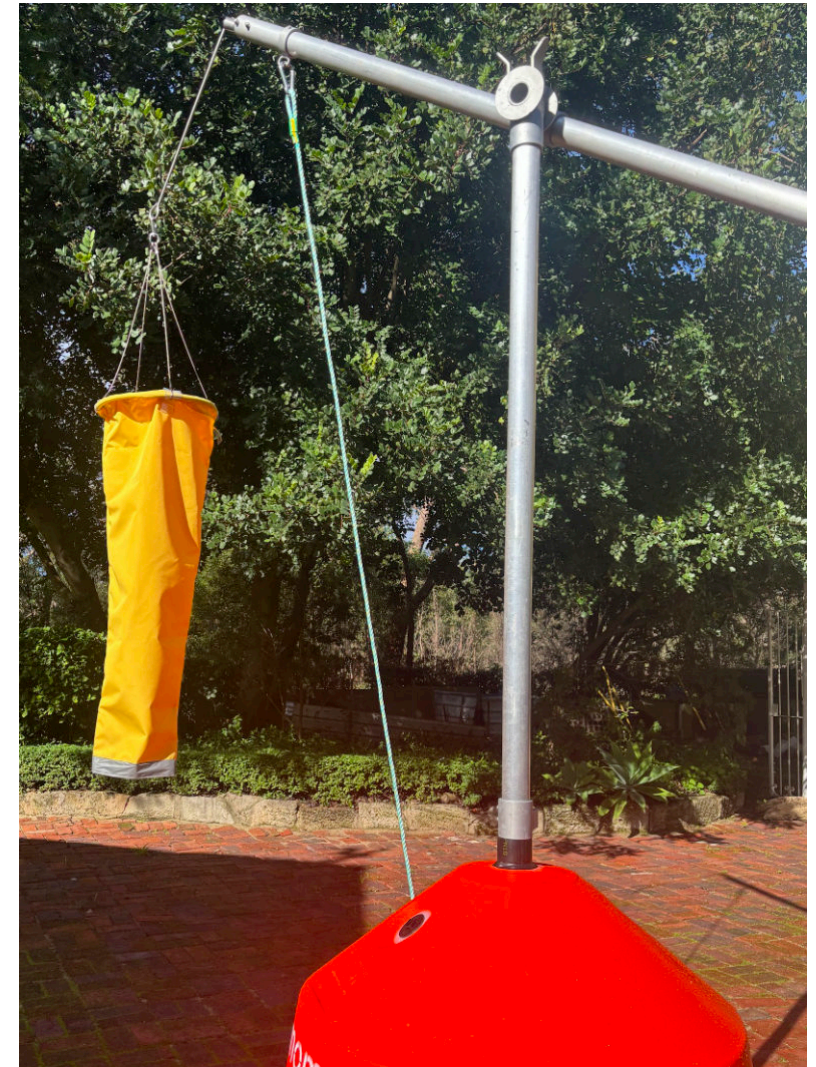
- Generally a highly visible Yellow or Orange Windsock is fitted
- Windsock sizes (recommended): 900 to 1500mm in length
- Anti Static (Oil & Gas) Windsocks also available
- Windsock connected to top of pole via a robust and extremely strong Rotor Arm Pivot

Base Section - Pole & Ballast Base

- Typical height of Swivelling pole is 4m (also available to 6m)
- Pole has an OD Ø 60.3mm 50NB, Aluminium Pipe (top and bottom section)
- Rotomold base available for either Wind Regions A & B or A through D
- Highly portable - either by forklift or, if emptied, by hand

Information	Pop Up Base	
	MOPU-Rotomold	MOPU-Rotomold-B
Height	1130mm	1070mm
Length/Width	1125mm	
Weight Empty	37kg	56kg
Pipe Diameter	Suitable for 60mmOD Pole	
Capacity	630L	500L
Wall Thickness	8mm	12mm
Inlet Size	45mm	200mm
Handles	Included	Optional
Material	MDPE	
Forklift Tyne Access	Included	
Suitable Fill Materials	Water	Concrete, Sand, Blue Metal/Water Mix
Colour	Standard: Orange. Customisable on request.	
Wind Region	A + B	A + B + C + D
Information	G5 Series Swivelpole	
	MOPU-G5-Ali	MOPU-G5-Ali-4m
Height (assembled)	6m Nominal	4m Nominal
Length (top pole only)	4.7m Nominal	2.6m Nominal
Length (base pole only)	3.6m Nominal	2.7m Nominal
Weight	26.8kg	20.2kg
Pole Diameter	60mmOD	
Material	Aluminium and Steel with HDG Finish	

Key specifications - Rotomold Base & Swivelpole



Swivelling Pole enables safe and rapid - single person - Windsock installation and change over

Windsocks Australia Overview

Our aim is to be the leading supplier of Quality Windsock solutions in Australia and the Asia Pacific region.

Founded in 2003, Windsocks Australia is the premier specialist commercial & industrial Windsocks manufacturer in Australia. Handcrafting our products 100% in Australia using the best materials to ensure the highest quality standards.

We have delivered thousands of aviation, commercial and industrial windsock solutions throughout Australia, New Zealand, Papua New Guinea and the Asia Pacific.

Benefit from our knowledge to assist in getting the right windsock solution for your requirements.

Our success is built on a reputation for:

- High-quality products
- Extensive product knowledge
- Competitive pricing
- A commitment to innovation
- Dedication with excellent customer service
- Strong relationships with reputable manufacturers



Windsocks Australia Pty Ltd. For more info contact us on info@windsocksaustralia.com.au or call on +61 (0) 468 474 656

windsocksaustralia.com.au

Windsocks Australia: Product Range

Windsocks

We specialise in manufacturing and supplying premium windsocks designed to provide indicated wind direction and speed.

Our windsocks are made from the most durable materials and can withstand harsh weather conditions. They are available in various sizes and colours to suit different applications. Beware cheap imitations.



Tried and tested over many years. The highest quality Windsocks available

Windsock Poles & Mounting Hardware

We offer a range of windsock poles and mounting hardware, including galvanised steel mid and base hinging poles, brackets, and clamps. Our products are designed for easy installation, safe operation and long-lasting performance.



Windsock Frames & Rotor Arm Pivots

We provide high end windsock frames and Rotor Arm Pivots constructed entirely from stainless steel.



Customisation

We understand that different industries have unique requirements. Therefore, we offer customisation services to tailor Windsock assemblies to the specific needs of our customers.

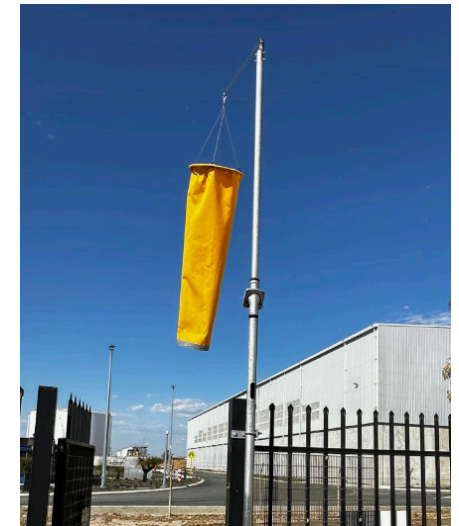
High end, stainless steel frames and pole adaptors, including customised fabrication



CASA compliant Illuminated Wind Direction Indicators (IWDI) used for night time operations at airports and helicopter landing sites



Mid and base hinging poles, providing safe and cost effective solutions - eliminating the need for elevated work platforms



Windsocks Australia: Expertise & Industry Focus



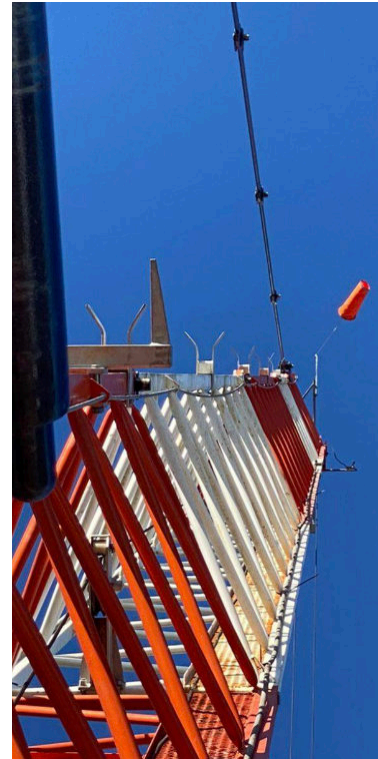
NSW Health - retro fit HLS IWDI Windsock assembly - North Coast, NSW

Aviation: Our Windsocks are compliant with CASA Regulations and play a critical role in providing wind direction information for airports, helipads and airstrips, ensuring safe takeoffs and landings.



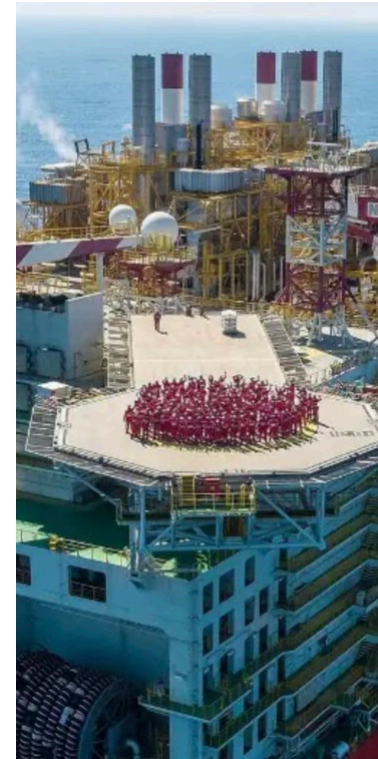
Kemerton - Lithium processing plant - Bunbury, WA

Mining, Resources, Industrial: We understand the unique challenges faced by these sectors. Our windsocks help improve safety during operations by providing real-time wind information in hazardous environments.



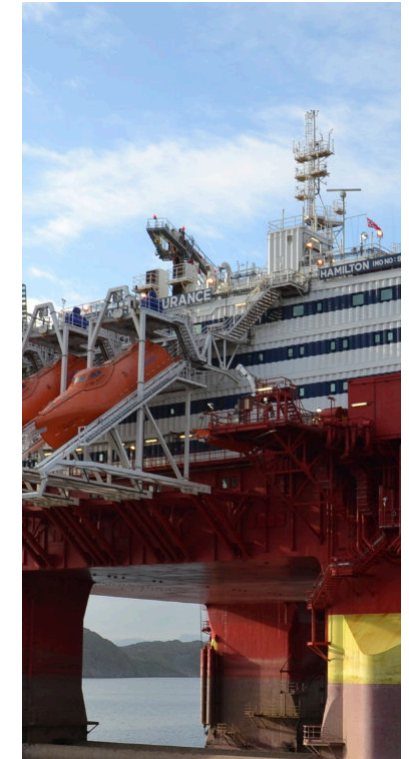
As seen on cranes around the Sydney skyline - Sydney, NSW

Construction & Infrastructure: Our windsocks are used on construction sites and infrastructure projects to assess wind conditions for dust control, crane operations, and other movements ensuring worker safety and optimal.



Shell Prelude - FPSO - Browse Basin - 475km north-north east of Broome, WA

Oil and Gas: We supply anti-static windsocks and related products to oil and gas facilities, helping to ensure safe operations and adherence to strict safety protocols.



Flotel Endurance, offshore accommodation vessel - Various Locations

Marine & Offshore: Our windsocks are utilised in marine and offshore environments to provide wind direction guidance for vessel navigation, offshore platforms, and port operations.